

# Return to School Plan 2021

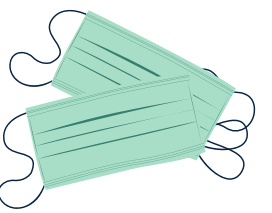
GSSD will follow the current Public Health Orders and the advice and recommendation of the Local Medical Health Officer when revising the 2021-22 Return to School Plan.

**Information may change as the fall progresses.**

**Take a look below at some of the steps we will be taking to ensure safety and well-being remain our number one priority for the 2021-2022 school year:**

## Safe Attendance

- Students and staff who are **ill** should stay home
- An **isolation area** will be available if a student becomes ill at school
- **Masks** will be required for **all students, staff & visitors** while in a GSSD facility
- **Mask breaks** will be encouraged based on local context
- Masking is **not required** outdoors



## Safe Transportation

- **Assigned** seating will continue
- **Masks** will be required for **all** riders
- Where possible, families are **encouraged** to take alternate means for students to get to and from school
- **Sanitization** will continue
- **No** guest ridership



## Safe Facilities

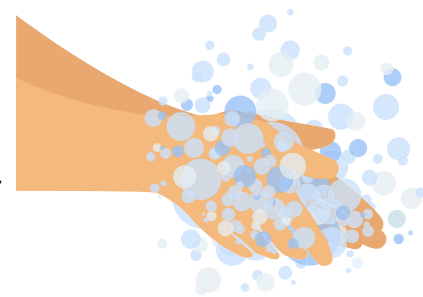


- Facilities will ensure that **heightened** sanitary and hygienic practices are in place
- Adequate **soap** and **sanitizer** will be available



## Safe Classrooms

- **Hand hygiene** will be promoted and practiced



## Instruction

- **Full Saskatchewan curriculum** will be taught
- Forward-facing instruction may be required based on local context

## Safe Activities

- Masking is **not required** during indoor Phys. Ed classes



- Extra-curricular and Co-curricular activities **will continue** with some restrictions based on Public Health Orders

- Sports, Fitness, Dance, Drama, Band, Choir **will continue** with some restrictions based on Public Health Orders