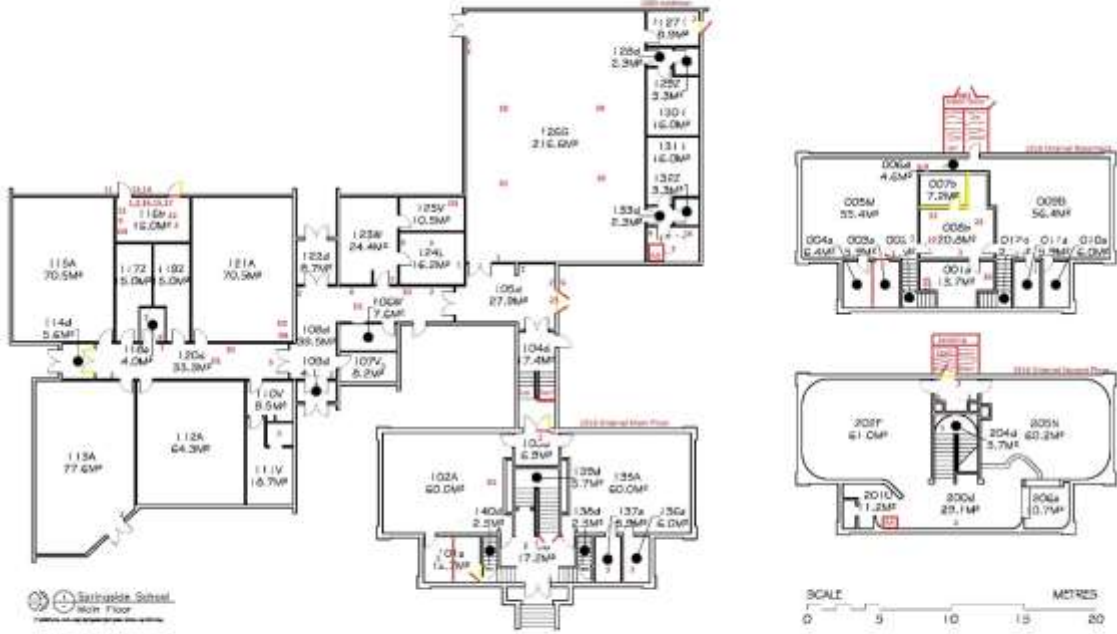


Springside School



Springside is one of Good Spirit School Division's oldest buildings, built in 1919, with an addition built in 1983. This is a K-8 school with a current year enrollment of 119 students.



The 1919 section of the school is two stories with a stairwell running up the centre and a classroom on either side of the stair. The basement is used for small group work now, though when this school was at peak capacity the basement was used for classrooms.



This is a classroom in the 1919 section of the school.



Upstairs is the library.



And a multi-purpose classroom.



Proceeding down the stairs to the new addition the building has a gymnasium.





This is the hallway connecting the remaining section of the school.



This wing houses four classrooms.



This is the Kindergarten – Grade one room.



The office.



There have been a few wheelchair students, which has created some accessibility challenges in this old building. One adaptation made was to create an accessible washroom from the two staff washrooms.



Another unique challenge at this school is the continued swarms of bees. For some reason this school is of interest to bees and they constantly swarm this school to try to get inside. We frequently collect the swarms to remove the threat from the school. One year a large hive was harvested from the ceiling space in the library and Facilities Technician Wes Katzberg was able to collect several pounds of honey.



This is a picture of the bees swarming at the top of the 1919 section of the school.

And here they are at the basement trying to get into a vent.

