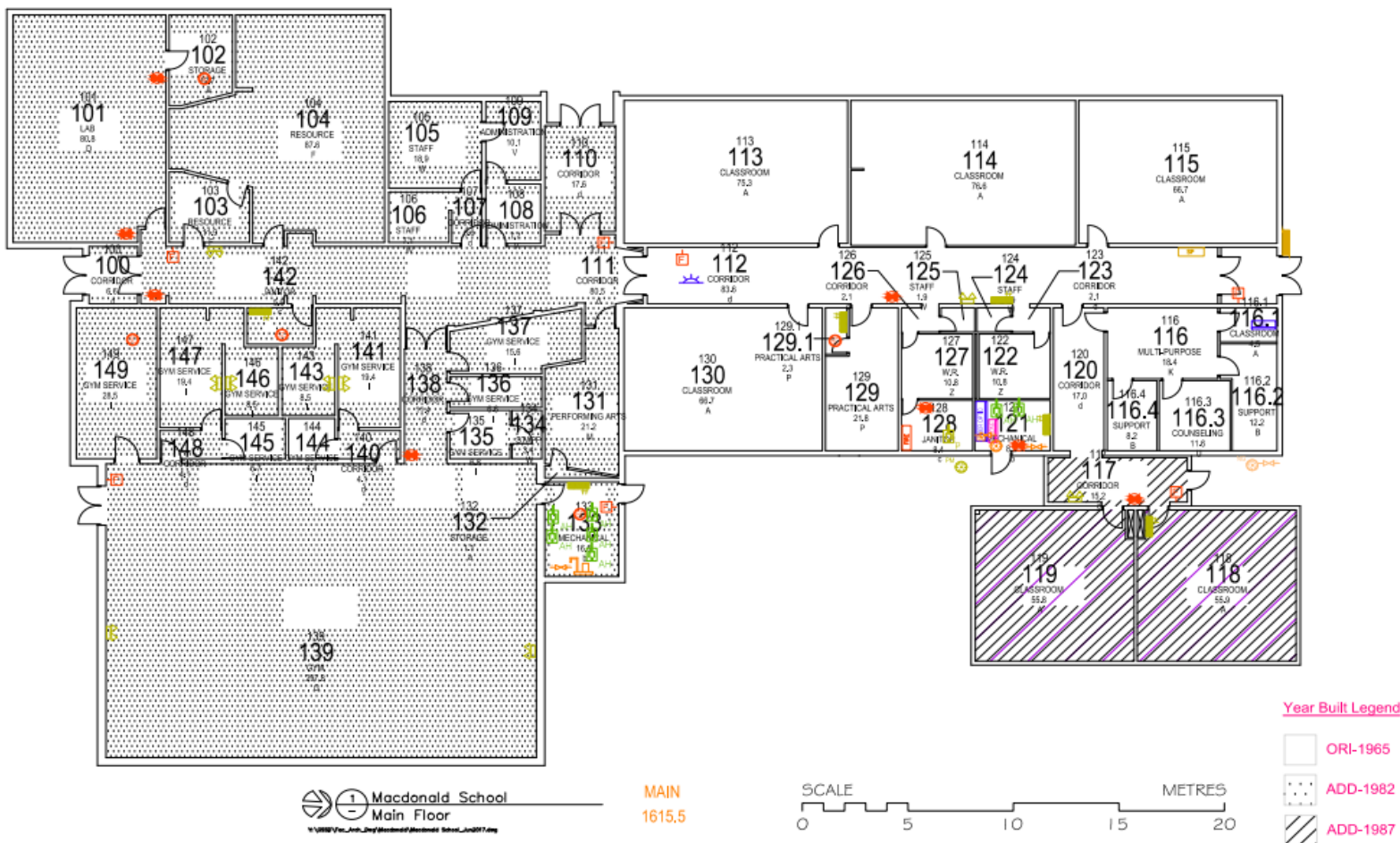


Macdonald School



School Details	
Grade Configuration	K-9
Size	1,616 m <sup>2</sup> (17,394.48 ft <sup>2</sup> )
Original Build Date	1965
Addition(s)	1982 and 1987
Enrollment	142
Classrooms	8
Gymnasium, PAA, Library, Band and Other	Gym, Home Ec, Multipurpose/Offices.



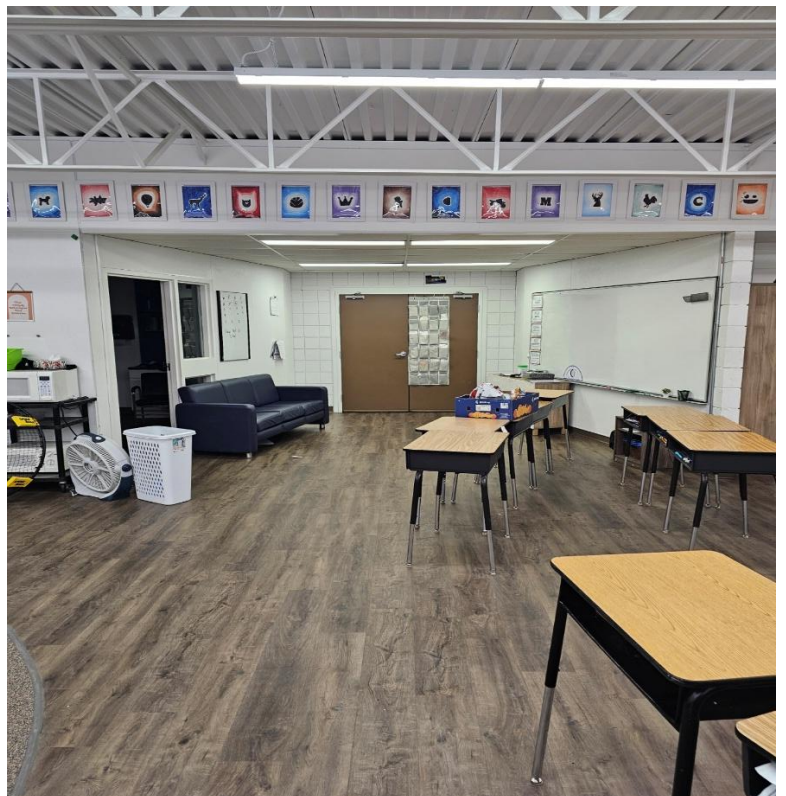
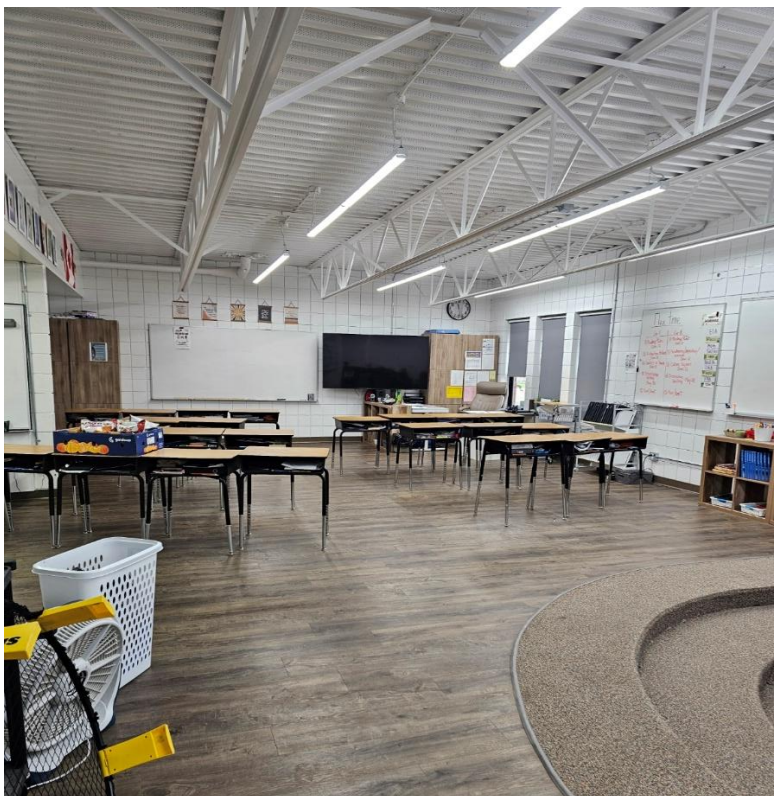


Entrance and Corridors:





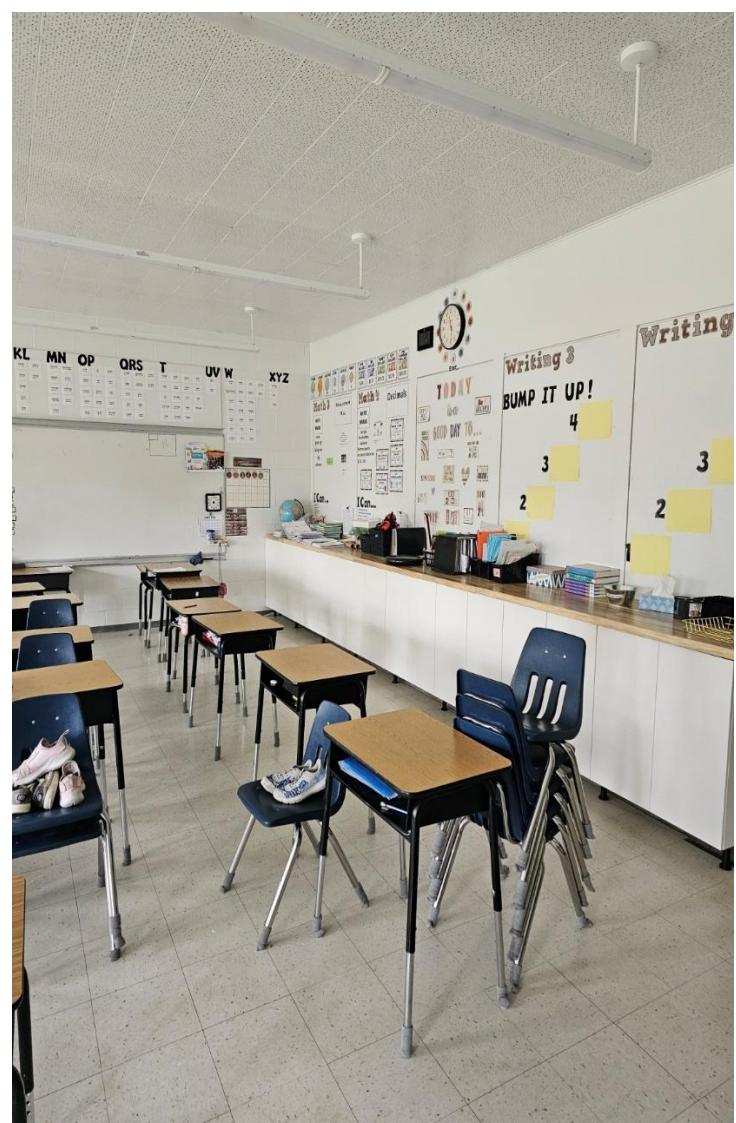
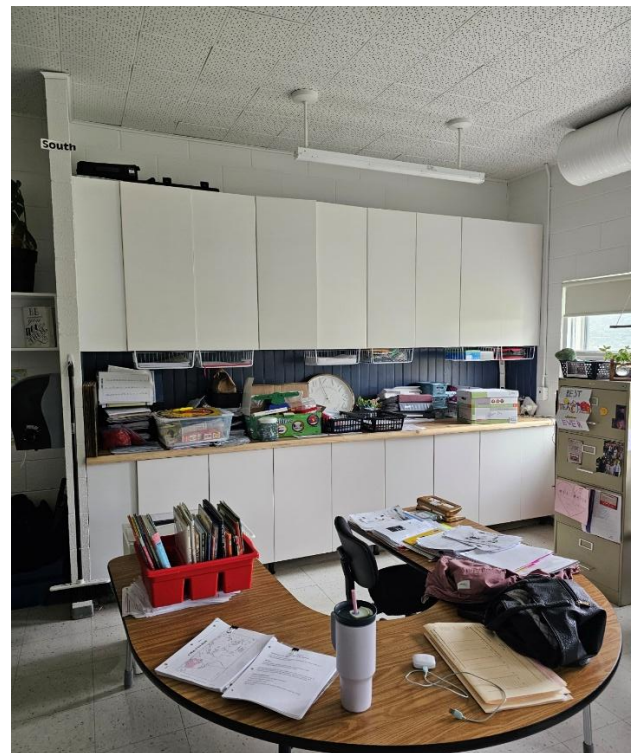
Classrooms:













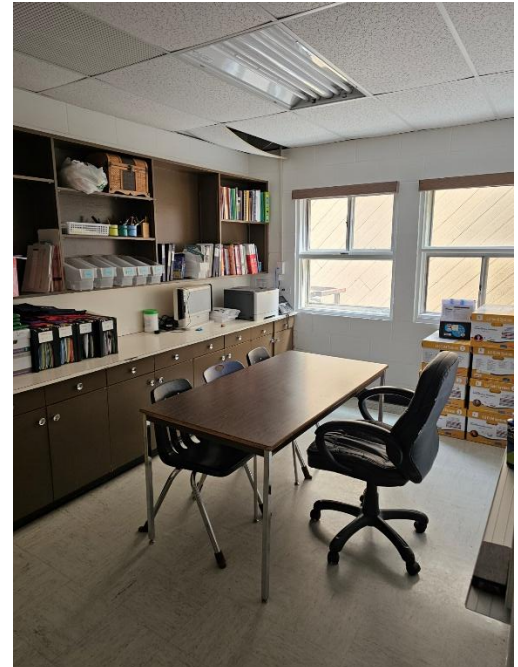
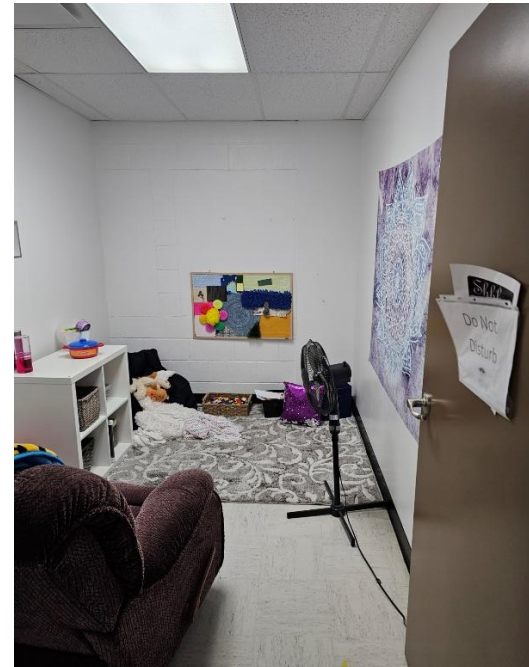




## Home Economics:

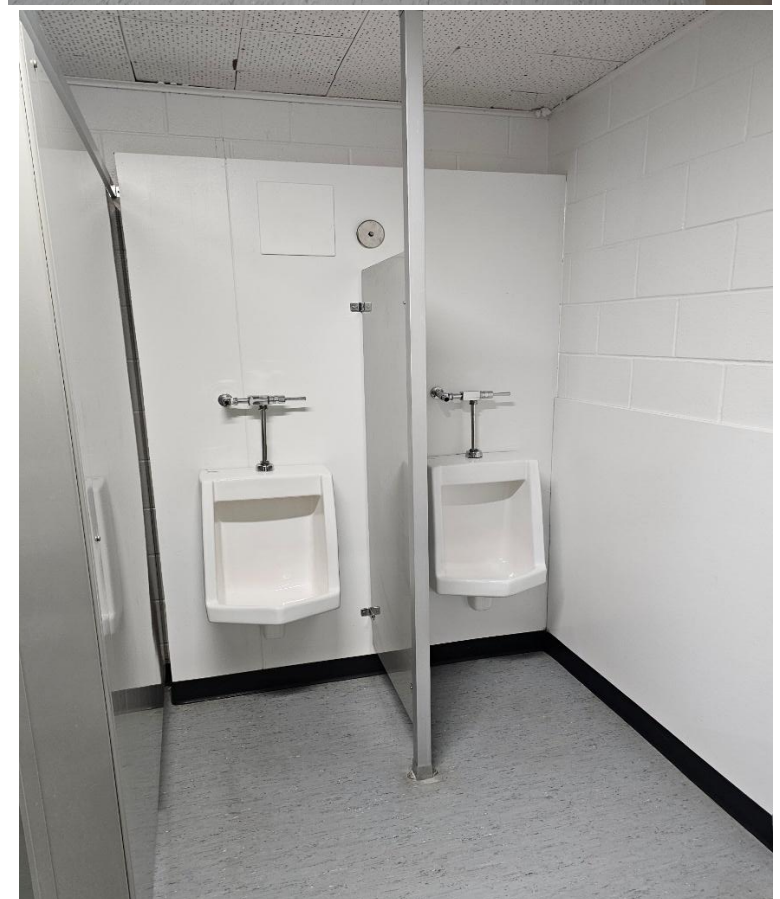
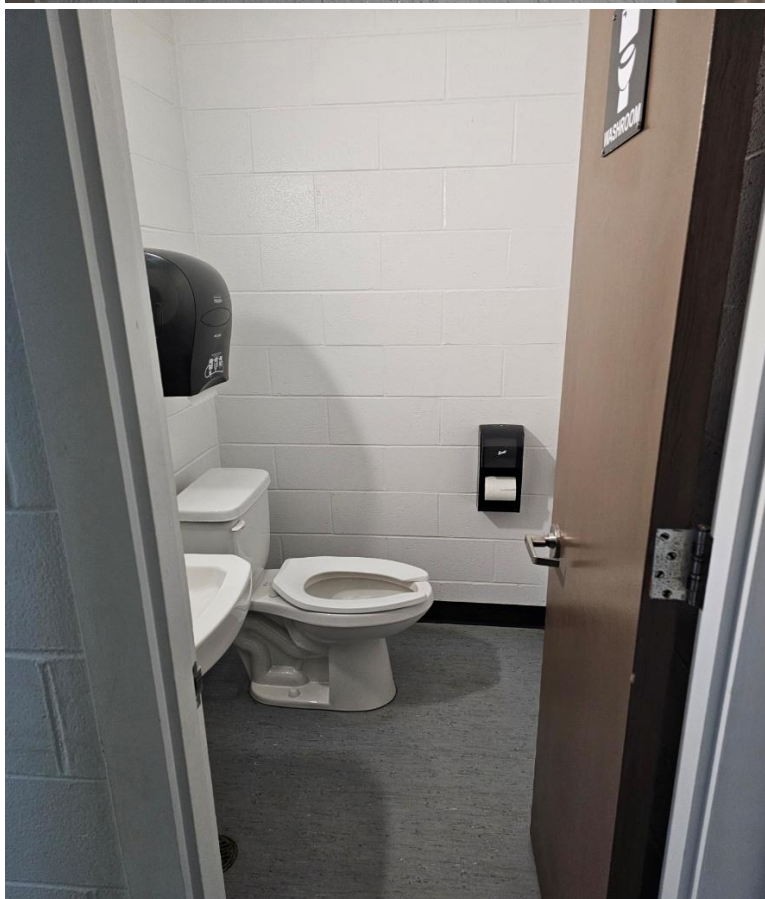


## Sensory and Meeting Rooms:





Washrooms:





Gymnasium:





Outdoor Space:

















Recently completed projects:

- Phone system
- Washroom renovations
- Learning commons
- Roof sections 1,2,3, and 4
- Perimeter surveillance

Planned projects:

- Removal of north entrance concrete
- Portable and Kindergarten classroom renos
- Gymnasium renovation
- Fire alarm upgrade
- Storage solutions

Principal Mellissa Johanson is a strong advocate for her school, consistently representing the needs of students, staff, and the broader community. Her passion for the facility, combined with dedication and creativity, drives her to go above and beyond in creating the best possible learning environment for her students.